

Provincial Gazette

Free State Province

Published by Authority



Provinsiale Koerant

Provinsie Vrystaat

Uitgegee op Gesag

SPECIAL

NO. 60	MONDAY, 20 JULY 2015	NO. 60	MAANDAG, 20 JULIE 2015
GENERAL NOTICE		ALGEMENE KENNISGEWING	
21	Municipal Demarcation Board: Delimitation of Municipal Wards in Terms of the Local Government: Municipal Structures Act, 1998	21	Munisipale Afbakeningsraad: Afbakening Van Munisipale Wyke Ingevolge die Wet op Plaaslike Regering: Munisipale Strukture, 1998
Ngwathe Local Municipality	FS203.....2	Ngwathe Plaaslike Munisipaliteit	FS2032

GENERAL NOTICE / ALGEMENE KENNISGEWING

[NO.21 OF 2015]

<p style="text-align: center;">MUNICIPAL DEMARCATION BOARD: DELIMITATION OF MUNICIPAL WARDS IN TERMS OF THE LOCAL GOVERNMENT: MUNICIPAL STRUCTURES ACT, 1998</p> <p style="text-align: center;">Ngwathe Local Municipality FS203</p> <p>In terms of Item 5 (1) of Schedule 1 to the Local Government: Municipal Structures Act, 1998 (Act No. 117 of 1998) (the Act) the Municipal Demarcation Board hereby publishes its delimitation of wards for the above- mentioned municipality. Particulars of the delimitation are listed in the Schedule.</p> <p>In terms of Item 5 (2) of Schedule 1 to the Act, any person aggrieved by the delimitation may, within 14 days of publication of this notice, submit objections in writing to:</p> <p>The Municipal Demarcation Board Private Bag X123 Centurion 0046</p> <p>Fax: 086 5248643 Email: wards@demarcation.org.za</p> <p>The attached form MDB 5 must please be used to object. The form is also available on www.demarcation.org.za</p> <p>MS JANE THUPANA CHAIRPERSON: MUNICIPAL DEMARCATION BOARD</p>	<p style="text-align: center;">MUNISIPALE AFBAKENINGSRAAD: AFBAKENING VAN MUNISIPALE WYKE INGEVOLGE DIE WET OP PLAASLIKE REGERING: MUNISIPALE STRUKTURE, 1998</p> <p style="text-align: center;">Ngwathe Plaaslike Munisipaliteit FS203</p> <p>Ingevolge Item 5(1) van Bylae 1 van die Wet op Plaaslike Regering: Munisipale Strukture, 1998 (Wet No. 117 van 1998) (die Wet) publiseer die Munisipale Afbakeningsraad hiermee sy afbakening van wyke vir die bogenaaamde munisipaliteit. Besonderhede van die afbakening is vervat in die Bylae.</p> <p>Ingevolge item 5(2) van Bylae 1 van die Wet, kan enige persoon wat gegrief is deur 'n afbakening binne 14 dae vanaf publikasie van hierdie kennisgewing skriftelike besware voorlê aan:</p> <p>Die Munisipale Afbakeningsraad Privaatsak X123 Centurion 0046</p> <p>Faks: 086 5248643 E-pos: wards@demarcation.org.za</p> <p>Die aangehegte vorm MDB5 moet asseblief gebruik word om beswaar aan te teken. Die vorm is ook beskikbaar op www.demarcation.org.za</p> <p>MS JANE THUPANA VOORSITTER: MUNISIPALE AFBAKENINGSRAAD</p>
<p style="text-align: center;">SCHEDULE</p> <p>In terms of section 18(3) of the Local Government: Municipal Structures Act, 1998 (Act 117 of 1998), the MEC responsible for local government has determined that the municipal council consists of 36 councillors.</p> <p>After having consulted the Independent Electoral Commission, The Municipal Demarcation Board has delimited the municipality into 18 wards in terms of Schedule 1 of the Act.</p> <p>The number of registered voters in each ward does not vary by more than fifteen percent from the norm. The norm was determined by dividing the total number of voters on the municipal segment of the national common voters roll, namely 66354 voters on 5 March 2014, by the number of wards in the municipality.</p> <p>An overview map of the boundary of the municipality, with the boundaries of the wards within the municipality, and a map of each ward are attached. In case of a discrepancy between the map and this schedule, the map will prevail.</p> <p>The ward numbers, the voting districts and voting stations in each ward, and the number of voters are as follows:</p>	<p style="text-align: center;">BYLAE</p> <p>Ingevolge artikel 18(3) van die Wet op Plaaslike Regering: Munisipale Strukture, 1998 (Wet 117 van 1998) het die LUR vir plaaslike regering bepaal dat die munisipale raad bestaan uit 36 raadslede.</p> <p>Na oorlegpleging met die Onafhanklike Verkiesingskommissie het die Munisipale Afbakeningsraad die munisipaliteit in 18 wyke afgebaken ingevolge Bylae 1 van die Wet.</p> <p>Die getal geregistreerde kiesers in elke wyk, wyk nie meer as vyftien persent van die norm af nie. Die norm is bepaal deur die getal geregistreerde kiesers op die munisipale segment van die nasionale gemeenskaplike kieserslys, naamlik 66354 kiesers op 5 Maart 2014, deur die getal wyke in die munisipaliteit te deel.</p> <p>'n Oorsigkaart van die munisipale grens met die grense van die wyke binne die munisipale grens, en 'n kaart van elke wyk, is aangeheg. Ingeval van 'n verskil tussen 'n kaart en hierdie bylae, sal die kaart geld.</p> <p>Die wyknommers, die stemdistrikte en stemlokale in elke wyk, en die getal kiesers is as volg:</p>

Ward 1	comprises of a total of	3186	registered voters	
Wyk 1	bestaan uit 'n totaal van	3186	geregistreeerde kiesers	
MIN VOTERS/KIESERS:	3133		NORM: 3686	MAX VOTERS/KIESERS 4239

VOTING DISTRICT No.	VOTING STATION NAME	NUMBER OF VOTERS	SPLIT VD
STEMDISTRIK No	STEMLOKAAL NAAM	GETAL KIESERS	VERDEELDE SD
22820172	BLOEMHOF SCHOOL	161	
22810126	HONINGKLOOF FARM	149	
22820273	HLWEKO SCHOOL	32	
22820217	ARCADIA FARM SCHOOL	156	
22820206	STRATFORD SCHOOL	190	
22810137	KOPPIES FARMERS WINKEL	183	
22820127	KOPJESLAAGTE FARM	72	
22820116	PALMIETKUIL FARM SHED	195	
22820105	GOTTENBURG HEILBRON TEMPORARY	135	
22820093	VYANDSVLEI TOWER SERVICE STATION	153	
22700067	SANDERSVILLE HALL	1408	
22820194	DIPKRAAL SCHOOL	235	
22820183	THABANTWA SCHOOL	117	

Ward 2	comprises of a total of	3407	registered voters	
Wyk 2	bestaan uit 'n totaal van	3407	geregistreeerde kiesers	
MIN VOTERS/KIESERS:	3133		NORM: 3686	MAX VOTERS/KIESERS 4239

VOTING DISTRICT No.	VOTING STATION NAME	NUMBER OF VOTERS	SPLIT VD
STEMDISTRIK No	STEMLOKAAL NAAM	GETAL KIESERS	VERDEELDE SD
22700034	PHIRITONA TOWN HALL	1236	Yes/Ja
22700113	PHIRIHADI PRIMARY SCHOOL	690	
22700023	HEILBRON TOWN HALL	1481	

Ward 3	comprises of a total of	3134	registered voters	
Wyk 3	bestaan uit 'n totaal van	3134	geregistreeerde kiesers	
MIN VOTERS/KIESERS:	3133		NORM: 3686	MAX VOTERS/KIESERS 4239

VOTING DISTRICT No.	VOTING STATION NAME	NUMBER OF VOTERS	SPLIT VD
STEMDISTRIK No	STEMLOKAAL NAAM	GETAL KIESERS	VERDEELDE SD
22700056	KEARABETSWE PRIMARY SCHOOL	1821	
22700090	TEMPORARY VOTING STATION (PHAHAMENG)	947	
22700045	SEDIBA THUTO HIGH SCHOOL	366	Yes/Ja

Ward 4	comprises of a total of	3134	registered voters	
Wyk 4	bestaan uit 'n totaal van	3134	geregistreeerde kiesers	
MIN VOTERS/KIESERS:	3133		NORM: 3686	MAX VOTERS/KIESERS 4239

VOTING DISTRICT No.	VOTING STATION NAME	NUMBER OF VOTERS	SPLIT VD
STEMDISTRIK No	STEMLOKAAL NAAM	GETAL KIESERS	VERDEELDE SD
22700012	PHIRITONA PUBLIC LIBRARY	1139	

22700089	MOUNTAIN-VIEW GROUND	1014	
22700102	UNITING REFORMED CHURCH	743	
22700034	PHIRITONA TOWN HALL	238	Yes/Ja

Ward 5 comprises of a total of 3625 registered voters
Wyk 5 bestaan uit 'n totaal van 3625 geregistreeerde kiesers
MIN VOTERS/KIESERS: 3133 **NORM:** 3686 **MAX VOTERS/KIESERS** 4239

VOTING DISTRICT No. STEMDISTRIK No	VOTING STATION NAME STEMLOKAAL NAAM	NUMBER OF VOTERS GETAL KIESERS	SPLIT VD VERDEELDE SD
22820307	TEMPORARY VOTING STATION (MOHEREPA OPEN SP)	1374	
22820295	TEMPORARY VOTING STATION (AIRPORT OPEN SPAC)	1091	
22700045	SEDIBA THUTO HIGH SCHOOL	1160	Yes/Ja

Ward 6 comprises of a total of 4132 registered voters
Wyk 6 bestaan uit 'n totaal van 4132 geregistreeerde kiesers
MIN VOTERS/KIESERS: 3133 **NORM:** 3686 **MAX VOTERS/KIESERS** 4239

VOTING DISTRICT No. STEMDISTRIK No	VOTING STATION NAME STEMLOKAAL NAAM	NUMBER OF VOTERS GETAL KIESERS	SPLIT VD VERDEELDE SD
22740050	BOITLAMO SECONDARY SCHOOL	1725	
22740061	NEW CATHOLIC CHURCH	2407	

Ward 7 comprises of a total of 4230 registered voters
Wyk 7 bestaan uit 'n totaal van 4230 geregistreeerde kiesers
MIN VOTERS/KIESERS: 3133 **NORM:** 3686 **MAX VOTERS/KIESERS** 4239

VOTING DISTRICT No. STEMDISTRIK No	VOTING STATION NAME STEMLOKAAL NAAM	NUMBER OF VOTERS GETAL KIESERS	SPLIT VD VERDEELDE SD
22740173	ZUMA OPEN SPACE - TVS	986	
22800103	MOOIHOEK FARM SCHOOL	118	
22740151	TAMBO OPEN SPACE	1545	
22740195	PARYS HOSPITAL TVL	222	
22800114	WEIVELD AGRICULTURE AND HOTEL SCHOOL	183	
22740049	TOKOLOHO OPEN SPACE- TVS	1086	Yes/Ja
22800125	BOHOLONG FARM SCHOOL	90	

Ward 8 comprises of a total of 3740 registered voters
Wyk 8 bestaan uit 'n totaal van 3740 geregistreeerde kiesers
MIN VOTERS/KIESERS: 3133 **NORM:** 3686 **MAX VOTERS/KIESERS** 4239

VOTING DISTRICT No. STEMDISTRIK No	VOTING STATION NAME STEMLOKAAL NAAM	NUMBER OF VOTERS GETAL KIESERS	SPLIT VD VERDEELDE SD
22810216	NOKANAPEDI FARM	120	
22740016	NG KERK WES SAAL	202	Yes/Ja
22810047	SERFONTEIN FARM SCHOOL	151	
22800237	INLANDSEE FARM	97	

22810104	ROOIWAL FARM	310	
22810092	SEIPONE FARM	211	
22790022	VREDEFORT TOWN HALL	1100	Yes/Ja
22810148	TABOR FARM SCHOOL	157	
22810115	ROOIPORTDAM FARM	154	
22810069	OUERSGIFT FARM	143	
22790011	MOKWALLO PUBLIC PRIMARY SCHOOL	1095	Yes/Ja
Ward 9	comprises of a total of	3422	registered voters
Wyk 9	bestaan uit 'n totaal van	3422	geregistreeerde kiesers
MIN VOTERS/KIESERS:	3133	NORM: 3686	MAX VOTERS/KIESERS 4239
VOTING DISTRICT No.	VOTING STATION NAME	NUMBER OF VOTERS	SPLIT VD
STEMDISTRIK No	STEMLOKAAL NAAM	GETAL KIESERS	VERDEELDE SD
22740049	TOKOLOHO OPEN SPACE- TVS	60	Yes/Ja
22740140	NTSHWEPHEPA PRIMERE SKOOL	1753	
22740139	BARNARD MOLOKOANE SCHOOL	1609	
Ward 10	comprises of a total of	4239	registered voters
Wyk 10	bestaan uit 'n totaal van	4239	geregistreeerde kiesers
MIN VOTERS/KIESERS:	3133	NORM: 3686	MAX VOTERS/KIESERS 4239
VOTING DISTRICT No.	VOTING STATION NAME	NUMBER OF VOTERS	SPLIT VD
STEMDISTRIK No	STEMLOKAAL NAAM	GETAL KIESERS	VERDEELDE SD
22740128	PHEHELLANG SECONDARY SCHOOL	1467	
22740038	TUMAHOLE COMMUNITY HALL	1322	Yes/Ja
22740072	TSWELOPELE PRE-SCHOOL	1450	
Ward 11	comprises of a total of	3209	registered voters
Wyk 11	bestaan uit 'n totaal van	3209	geregistreeerde kiesers
MIN VOTERS/KIESERS:	3133	NORM: 3686	MAX VOTERS/KIESERS 4239
VOTING DISTRICT No.	VOTING STATION NAME	NUMBER OF VOTERS	SPLIT VD
STEMDISTRIK No	STEMLOKAAL NAAM	GETAL KIESERS	VERDEELDE SD
22740162	LETAMO SPORTS GROUND	300	Yes/Ja
22740083	AHA-SETJHABA PRIMARY SCHOOL	1249	
22740094	TEMPORARY VOTING STATION (SAINT JOHN CHURCH)	1660	
Ward 12	comprises of a total of	3857	registered voters
Wyk 12	bestaan uit 'n totaal van	3857	geregistreeerde kiesers
MIN VOTERS/KIESERS:	3133	NORM: 3686	MAX VOTERS/KIESERS 4239
VOTING DISTRICT No.	VOTING STATION NAME	NUMBER OF VOTERS	SPLIT VD
STEMDISTRIK No	STEMLOKAAL NAAM	GETAL KIESERS	VERDEELDE SD
22740184	AME ST LEONARD CHURCH	535	
22740117	PARYS TOWN HALL	1511	
22740027	PARYS LIBRARY	1776	Yes/Ja

22740038	TUMAHOLE COMMUNITY HALL	35	Yes/Ja
Ward 13	comprises of a total of	3142	registered voters
Wyk 13	bestaan uit 'n totaal van	3142	geregistreeerde kiesers
MIN VOTERS/KIESERS:	3133	NORM: 3686	MAX VOTERS/KIESERS 4239
VOTING DISTRICT No.	VOTING STATION NAME	NUMBER OF VOTERS	SPLIT VD
STEMDISTRIK No	STEMLOKAAL NAAM	GETAL KIESERS	VERDEELDE SD
22740162	LETAMO SPORTS GROUND	1161	
22740106	SCHONKENVILLE HALL	1681	
22740027	PARYS LIBRARY	300	
Ward 14	comprises of a total of	4136	registered voters
Wyk 14	bestaan uit 'n totaal van	4136	geregistreeerde kiesers
MIN VOTERS/KIESERS:	3133	NORM: 3686	MAX VOTERS/KIESERS 4239
VOTING DISTRICT No.	VOTING STATION NAME	NUMBER OF VOTERS	SPLIT VD
STEMDISTRIK No	STEMLOKAAL NAAM	GETAL KIESERS	VERDEELDE SD
22790022	VREDEFORT TOWN HALL	32	Yes/Ja
22740016	NG KERK WES SAAL	1000	Yes/Ja
22790033	TATAISO PRIMARY SCHOOL	1962	
22790044	AFM CHURCH	1142	
Ward 15	comprises of a total of	4239	registered voters
Wyk 15	bestaan uit 'n totaal van	4239	geregistreeerde kiesers
MIN VOTERS/KIESERS:	3133	NORM: 3686	MAX VOTERS/KIESERS 4239
VOTING DISTRICT No.	VOTING STATION NAME	NUMBER OF VOTERS	SPLIT VD
STEMDISTRIK No	STEMLOKAAL NAAM	GETAL KIESERS	VERDEELDE SD
22740016	NG KERK WES SAAL	1554	Yes/Ja
22790123	S. S. PAKI SECONDARY SCHOOL	1876	
22790011	MOKWALLO PUBLIC PRIMARY SCHOOL	809	Yes/J
Ward 16	comprises of a total of	3682	registered voters
Wyk 16	bestaan uit 'n totaal van	3682	geregistreeerde kiesers
MIN VOTERS/KIESERS:	3133	NORM: 3686	MAX VOTERS/KIESERS 4239
VOTING DISTRICT No.	VOTING STATION NAME	NUMBER OF VOTERS	SPLIT VD
STEMDISTRIK No	STEMLOKAAL NAAM	GETAL KIESERS	VERDEELDE SD
22710046	REBATLA THUTO SECONDARY SCHOOL	1515	
22710024	IPATLELENG PRIMARY SCHOOL	2167	Yes/Ja
Ward 17	comprises of a total of	4217	registered voters
Wyk 17	bestaan uit 'n totaal van	4217	geregistreeerde kiesers
MIN VOTERS/KIESERS:	3133	NORM: 3686	MAX VOTERS/KIESERS 4239
VOTING DISTRICT No.	VOTING STATION NAME	NUMBER OF VOTERS	SPLIT VD
STEMDISTRIK No	STEMLOKAAL NAAM	GETAL KIESERS	VERDEELDE SD
22710013	KOPPIES COMMUNITY HALL	1083	
22710024	IPATLELENG PRIMARY SCHOOL	76	
22710035	KWAKWATSI HALL	1686	

22710057 METHODIST CHURCH 1372

Ward 18 comprises of a total of 3623 registered voters
Wyk 18 bestaan uit 'n totaal van 3623 geregistreeerde kiesers

MIN VOTERS/KIESERS: 3133 **NORM:** 3686 **MAX VOTERS/KIESERS** 4239

VOTING DISTRICT No. STEMDISTRIK No	VOTING STATION NAME STEMLOKAAL NAAM	NUMBER OF VOTERS GETAL KIESERS	SPLIT VD VERDEELDE SD
22680020	EDENVILLE HIGH HALL	443	
22680019	NGWATHE SECONDARY SCHOOL	1938	
22430292	SERNICK FARM SCHOOL	118	
22680031	NGWATHE COMMUNITY HALL	1124	

PLEASE USE ADDITIONAL PAGE SHOULD THE ALTERNATIVE PROPOSALS BE MORE THAN THE FOLLOWING SPACE AVAILABLE

FORM / VORM MDB5

WARD DELIMITATION / WYKSAFBAKENING

OBJECTION IN TERMS OF ITEM 5(2) OF SCHEDULE 1 TO THE LOCAL GOVERNMENT: MUNICIPAL STRUCTURES ACT, 1998

**BESWAAR INGEVOLGE ITEM 5(2) VAN BYLAE 1 VAN DIE WET OP
 PLAASLIKE REGERING: MUNISIPALE STRUKTURE, 1998**

Name of municipality / Naam van Munisipaliteit:.....

Code / Kode:

Name of aggrieved person or institution / Naam van beswaarde person / instelling :

.....

Contact person in case of an institution / Kontakpersoon in geval van 'n instelling :

.....

Address / Adres :.....

Tel. number / Tel.nommer :..... Cell number / Selfoonnommer:.....

Email address / Epos adres :.....

I hereby object to the delimitation of the boundaries of the following wards:

WARD NUMBER / WYK NOMMER	REASON / MOTIVATION

I request the Municipal Demarcation Board to consider the following alternative proposals/ Ek versoek dat die volgende alternatiewe voorstel oorweeg word:

.....

Ward number / Wyknommer	The ward should comprise of the following voting districts (Provide voting district number and the number of voters in brackets e.g. VD1123456(1500)+VD345678(2500)=4000 Die wyk moet bestaan uit die volgende stemdistrikte (voorsien stemdistriksnommers en die aantal geregistreerde kiesers, byvoorbeeld: VD1123456(1500)+VD345678(2500)=4000	Motivation / Motiveering

I confirm that / Ek bevestig dat:

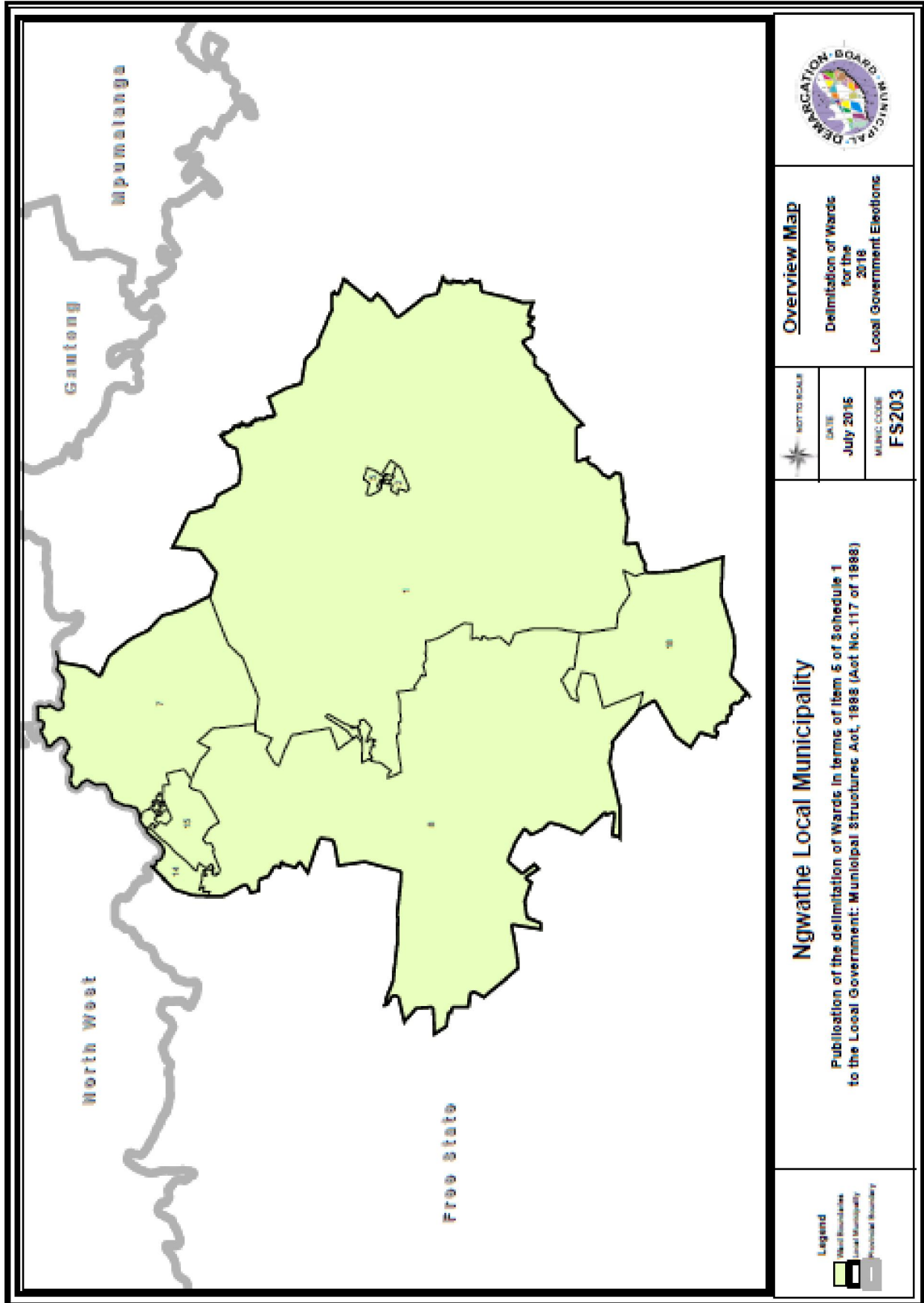
- each cluster of voting districts form a contiguous ward / die saamgevoegde stemdistrikte vorm 'n aaneenlopende wyk;
- the number of voters in each ward fall within the minimum and maximum of voters allowed per ward / die getal kiesers in elke wyk is binne die minimum en maksimum getal wat per wyk toegelaat word;
- the proposed ward boundaries comply, in general, with the criteria / die voorgestelde wyk voldoen in die algemeen aan die kriteria.

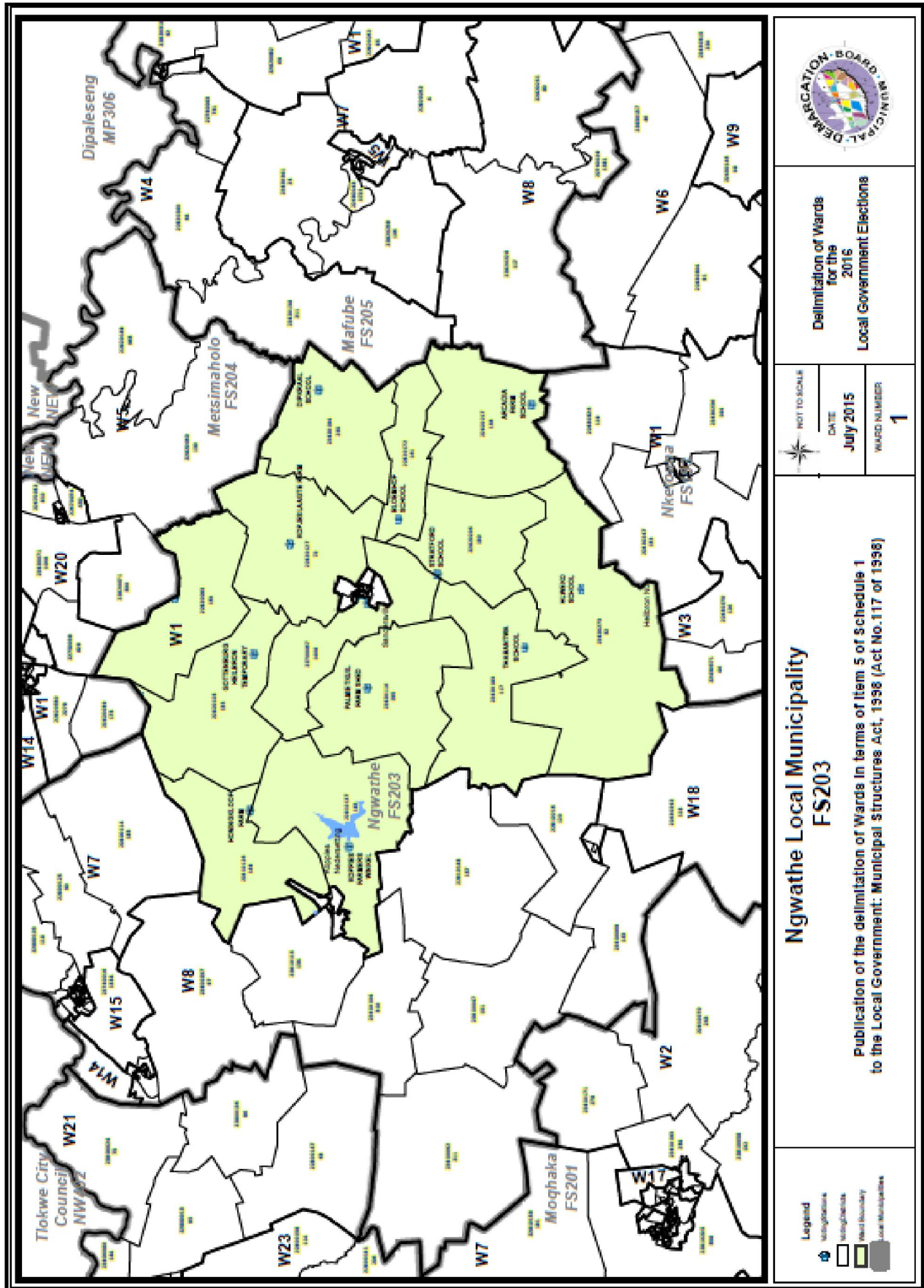
SIGNATURE

NAME AND SURNAME

DATE







	
Delimitation of Wards for the 2016 Local Government Elections	
NOT TO SCALE 	DATE July 2015
WARD NUMBER 1	
Ngwathe Local Municipality FS203	
Publication of the delimitation of Wards in terms of item 5 of Schedule 1 to the Local Government: Municipal Structures Act, 1998 (Act No. 117 of 1998)	
Legend <ul style="list-style-type: none">  Schools  Municipalities  Ward Boundary  Local Municipalities 	