

Wyk 32	bestaan uit 'n totaal van	6664	geregistreerde kiesers	
MIN VOTERS/KIESERS:	4926		NORM: 5795	MAX VOTERS/KIESERS 6664
VOTING DISTRICT No.	VOTING STATION NAME		NUMBER OF VOTERS	SPLIT VD
STEMDISTRIK No	STEMLOKAAL NAAM		GETAL KIESERS	VERDEELDE SD
22600055	ORION SCHOOL		2169	
22600853	GOUDVELD HIGH SCHOOL		317	Yes/Ja
22600101	REITZPARK PRIMARY SCHOOL		2043	
22600033	TORONTO COMMUNITY CENTRE		2135	
Ward 33	comprises of a total of	6009	registered voters	
Wyk 33	bestaan uit 'n totaal van	6009	geregistreerde kiesers	
MIN VOTERS/KIESERS:	4926		NORM: 5795	MAX VOTERS/KIESERS 6664
VOTING DISTRICT No.	VOTING STATION NAME		NUMBER OF VOTERS	SPLIT VD
STEMDISTRIK No	STEMLOKAAL NAAM		GETAL KIESERS	VERDEELDE SD
22600864	NAUDEVILLE PRIMARY SCHOOL		383	
22600011	BEDELIA PRIMARY SCHOOL		3009	
22600022	ST HELENA PRIMARY SCHOOL		2617	
Ward 34	comprises of a total of	6663	registered voters	
Wyk 34	bestaan uit 'n totaal van	6663	geregistreerde kiesers	
MIN VOTERS/KIESERS:	4926		NORM: 5795	MAX VOTERS/KIESERS 6664
VOTING DISTRICT No.	VOTING STATION NAME		NUMBER OF VOTERS	SPLIT VD
STEMDISTRIK No	STEMLOKAAL NAAM		GETAL KIESERS	VERDEELDE SD
22600044	WELKOM HIGH SCHOOL		1511	
22600066	GIMNASIUM HIGH SCHOOL		1908	
22600448	FLAMINGO PARK COMMUNITY CENTRE		1789	
22600583	RHEEDERPARK PRIMARY SCHOOL		1227	
22600853	GOUDVELD HIGH SCHOOL		228	Yes/Ja
Ward 35	comprises of a total of	6049	registered voters	
Wyk 35	bestaan uit 'n totaal van	6049	geregistreerde kiesers	
MIN VOTERS/KIESERS:	4926		NORM: 5795	MAX VOTERS/KIESERS 6664
VOTING DISTRICT No.	VOTING STATION NAME		NUMBER OF VOTERS	SPLIT VD
STEMDISTRIK No	STEMLOKAAL NAAM		GETAL KIESERS	VERDEELDE SD
22540014	MATLALETSA PUBLIC SCHOOL		1541	
22540025	ODENSIA PRIMERE SKOOL		1378	
22600460	JABULANI HALL		323	
22600707	REAHOLA COMPLEX HALL		631	
22640251	MERINO		48	
22600606	WESTERN HOLDINGS SCHOOL		1306	
22540182	TSHEPONG MINE HOSTEL		822	
Ward 36	comprises of a total of	5247	registered voters	
Wyk 36	bestaan uit 'n totaal van	5247	geregistreerde kiesers	

MIN VOTERS/KIESERS:	4926	NORM: 5795	MAX VOTERS/KIESERS	6664
VOTING DISTRICT No. STEMDISTRIK No	VOTING STATION NAME STEMLOKAAL NAAM	NUMBER OF VOTERS GETAL KIESERS	SPLIT VD VERDEELDE SD	
22640037	ONRUST FARM STORE	196		
22540036	ODENDAALSRUS TOWN HALL	2000		
22450025	TSHIRELETSO SCHOOL	1124		
22450070	KATLEHONG PRESCHOOL	601		
22640206	EERSTEGELUK	168		
22450047	ALLANRIDGE TLC	1158		

PLEASE USE ADDITIONAL PAGE SHOULD THE ALTERNATIVE PROPOSALS BE MORE THAN THE FOLLOWING SPACE AVAILABLE

FORM / VORM MDB5

WARD DELIMITATION / WYKSAFBAKENING

OBJECTION IN TERMS OF ITEM 5(2) OF SCHEDULE 1 TO THE LOCAL GOVERNMENT: MUNICIPAL STRUCTURES ACT, 1998

**BESWAAR INGEVOLGE ITEM 5(2) VAN BYLAE 1 VAN DIE WET OP
PLAASLIKE REGERING: MUNISIPALE STRUKTURE, 1998**

Name of municipality / Naam van Munisipaliteit:.....

Code / Kode:

Name of aggrieved person or institution / Naam van beswaarde person / instelling :

.....

Contact person in case of an institution / Kontakpersoon in geval van 'n instelling :

.....

Address / Adres :.....

Tel. number / Tel.nommer :..... Cell number / Selfoonnommer:.....

Email address / Epos adres :.....

I hereby object to the delimitation of the boundaries of the following wards:

WARD NUMBER / WYK NOMMER	REASON / MOTIVATION

I request the Municipal Demarcation Board to consider the following alternative proposals/ Ek versoek dat die volgende alternatiewe voorstel oorweeg word:

Ward number / Wyknommer	The ward should comprise of the following voting districts (Provide voting district number and the number of voters in brackets e.g. VD1123456(1500)+VD345678(2500)=4000 Die wyk moet bestaan uit die volgende stemdistrikte (voorsien stemdistriksnommers en die aantal geregistreerde kiesers, byvoorbeeld: VD1123456(1500)+VD345678(2500)=4000	Motivation / Motiveering

I confirm that / Ek bevestig dat:

- each cluster of voting districts form a contiguous ward / die saamgevoegde stemdistrikte vorm 'n aaneenlopende wyk;
- the number of voters in each ward fall within the minimum and maximum of voters allowed per ward / die getal kiesers in elke wyk is binne die minimum en maksimum getal wat per wyk toegelaat word;
- the proposed ward boundaries comply, in general, with the criteria / die voorgestelde wyk voldoen in die algemeen aan die kriteria.

SIGNATURE

NAME AND SURNAME

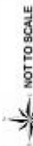
DATE





Overview Map

Delimitation of Wards
for the
2016
Local Government Elections

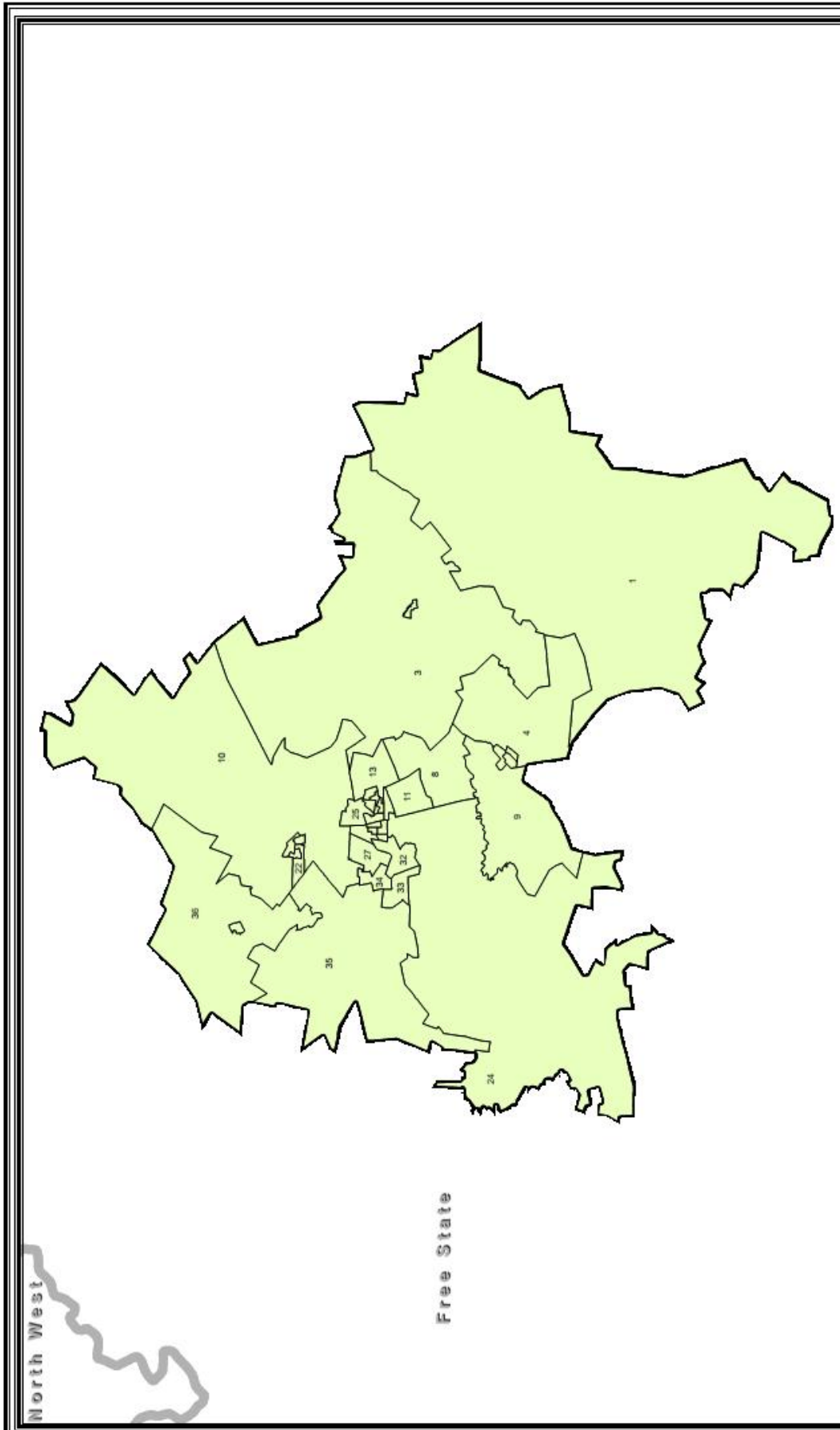


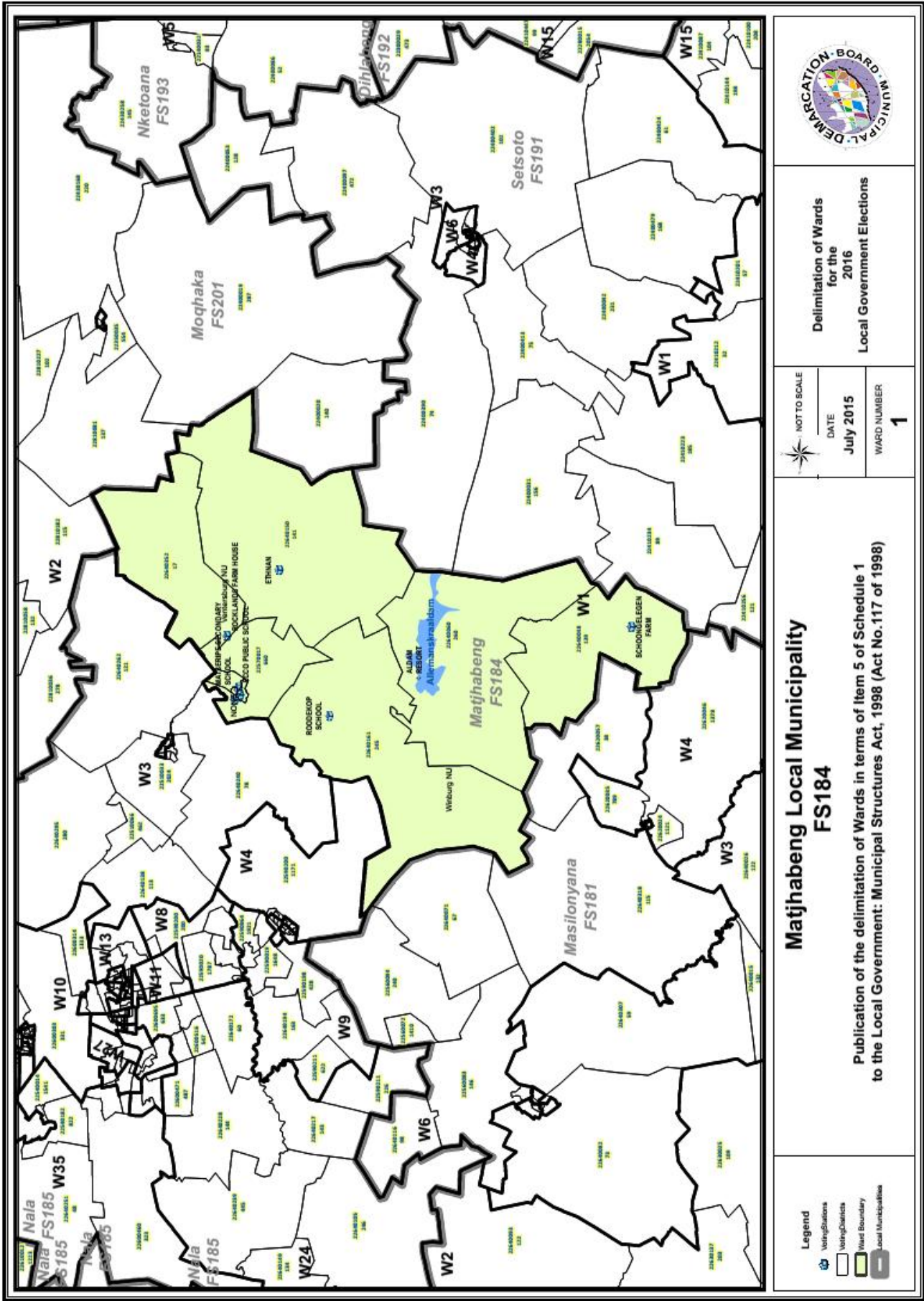
DATE
July 2015

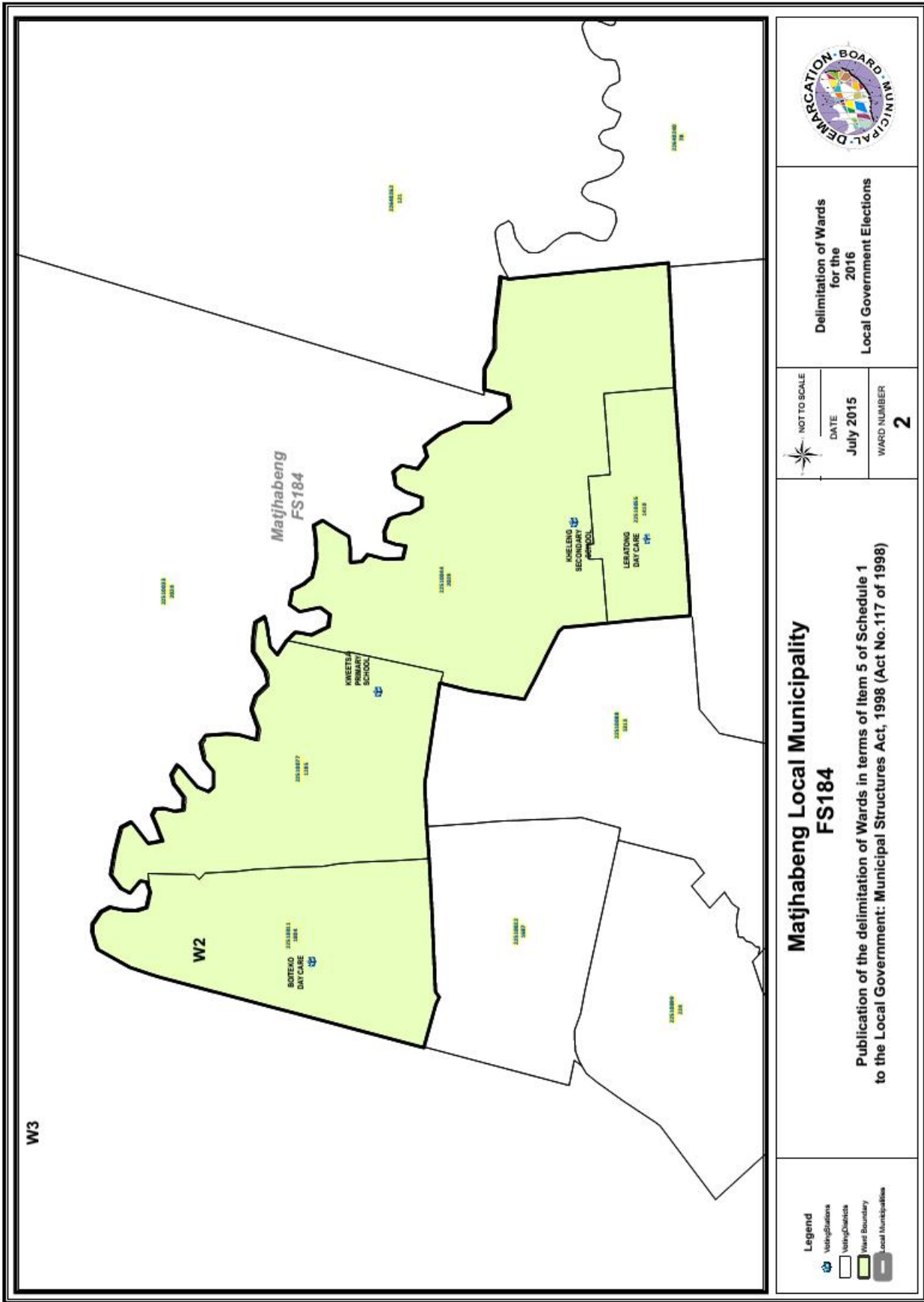
MUNIC CODE
FS184

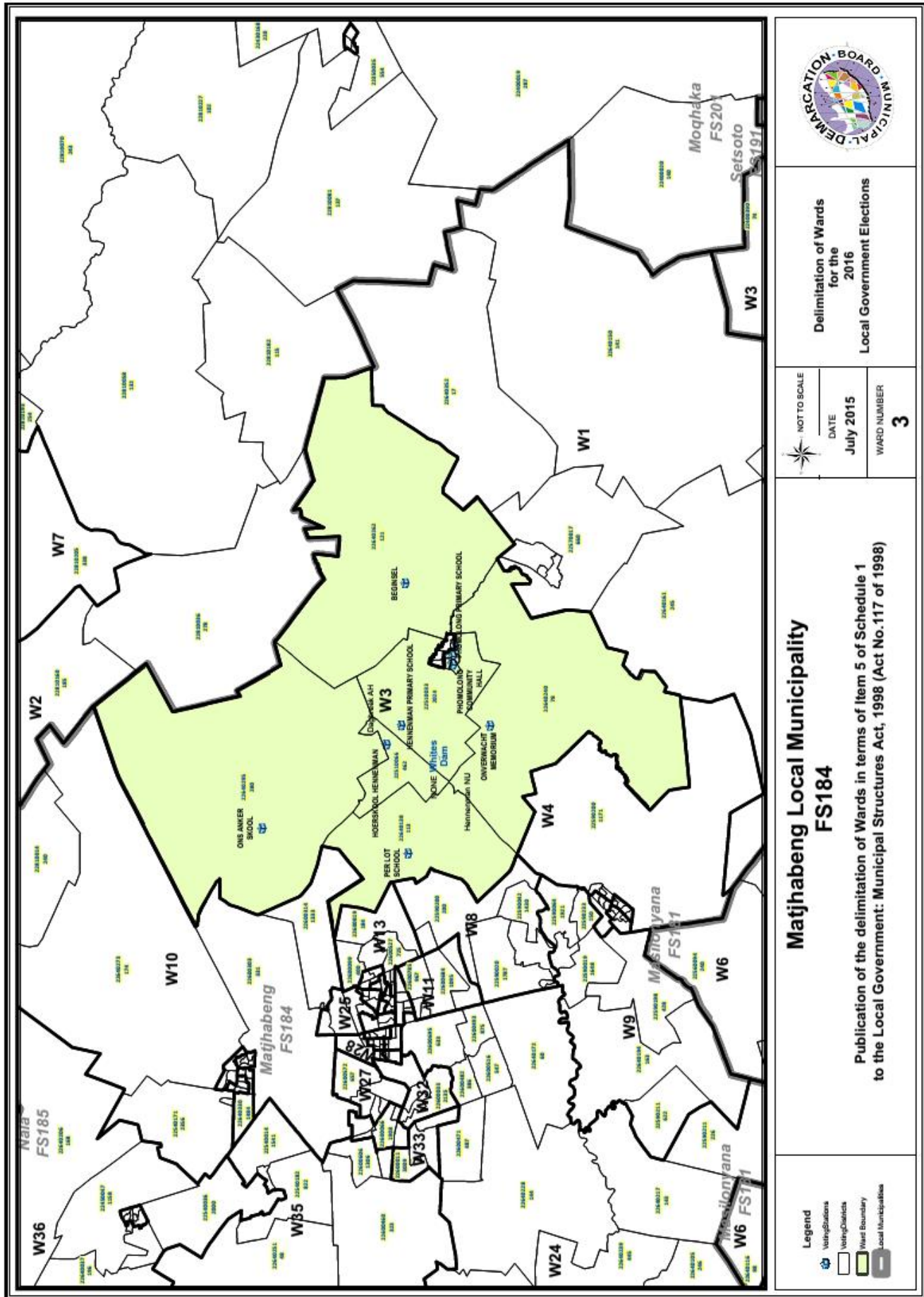
Matjhabeng Local Municipality

Publication of the delimitation of Wards in terms of Item 5 of Schedule 1
to the Local Government: Municipal Structures Act, 1998 (Act No.117 of 1998)









Delimitation of Wards
for the
2016
Local Government Elections

NOT TO SCALE
DATE
July 2015
WARD NUMBER
3

**Matjhabeng Local Municipality
FS184**

Publication of the delimitation of Wards in terms of Item 5 of Schedule 1
to the Local Government: Municipal Structures Act, 1998 (Act No.117 of 1998)

- Legend
- Voting Stations
 - Voting Districts
 - Ward Boundary
 - Local Municipality

