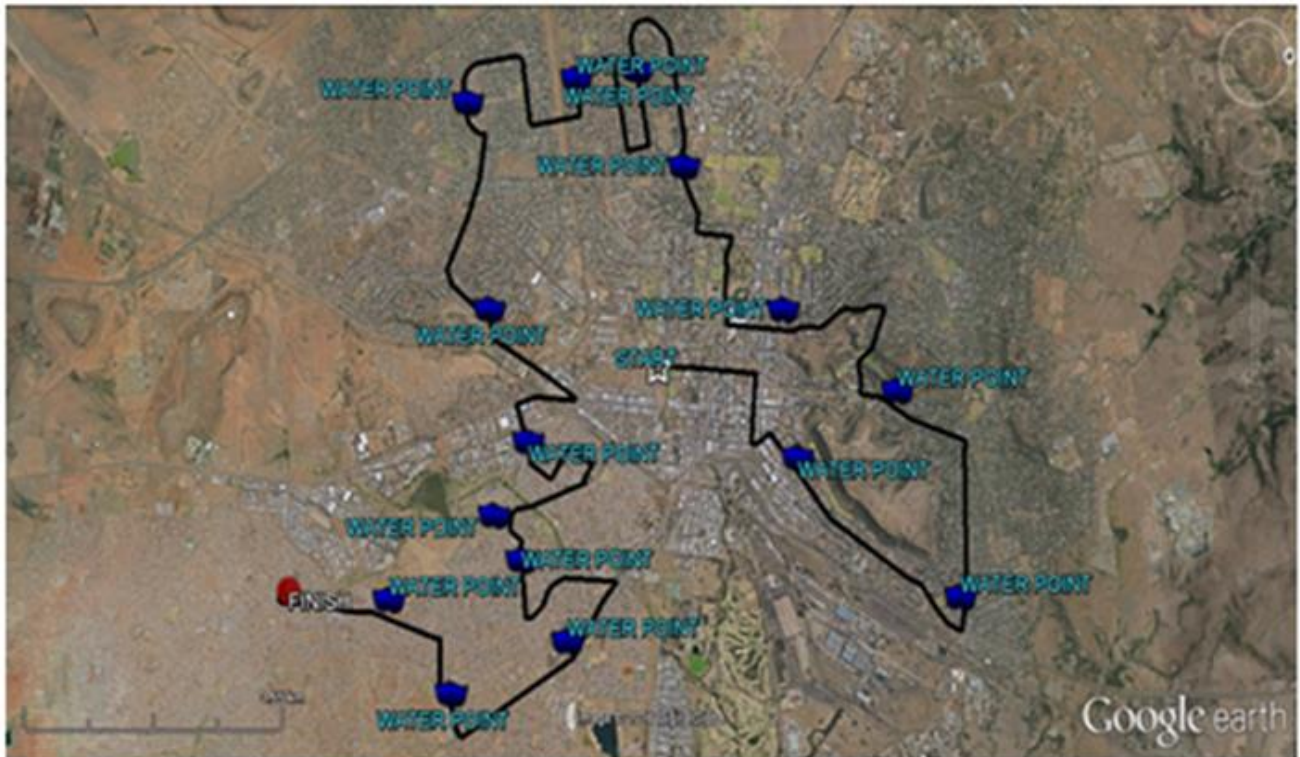


ROUTE MAP – 42.2km

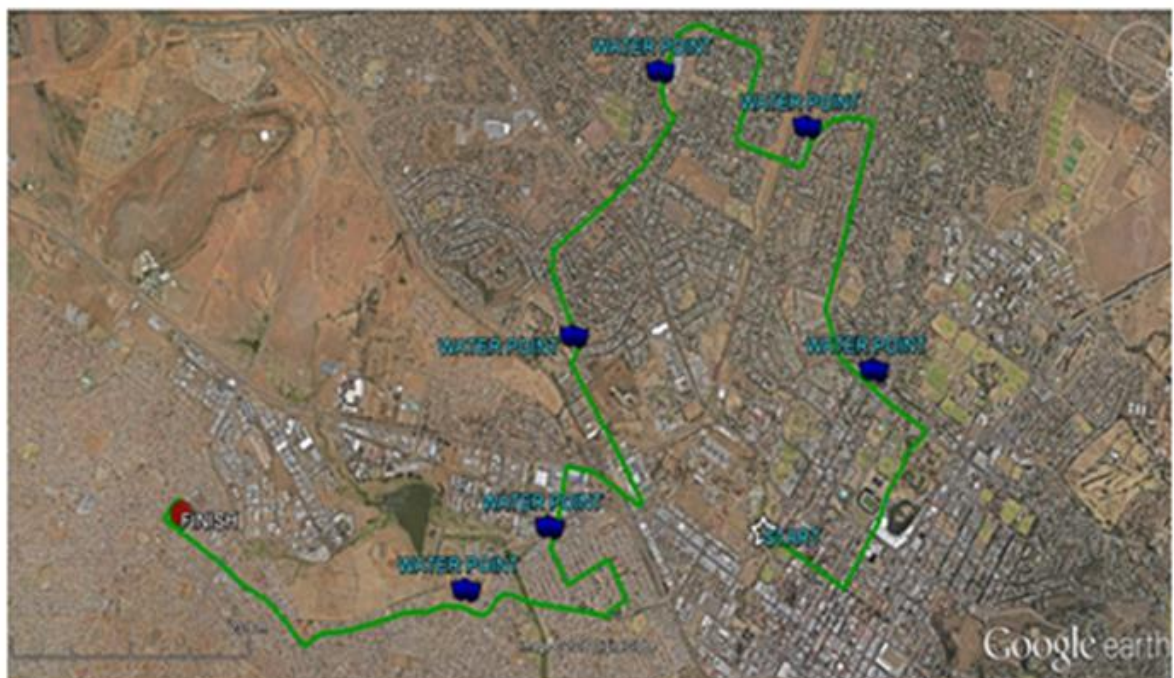


PROFILE OF THE ROUTE - 42.2km

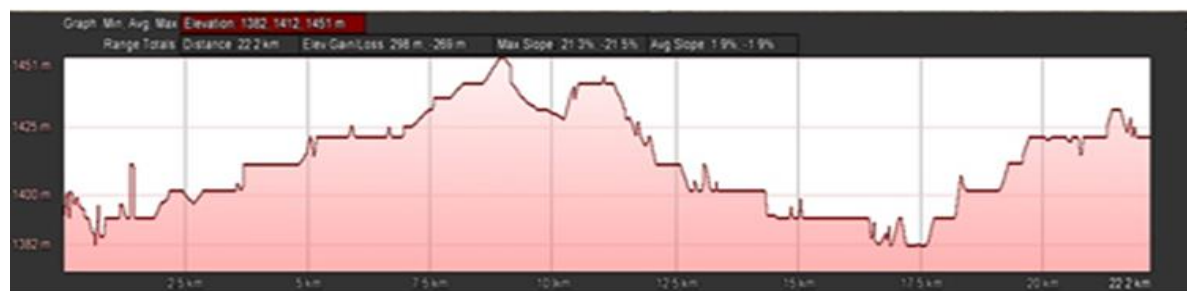


- Highest peak is 1476m at 10km (FS House)

ROUTE MAP – 21.1km

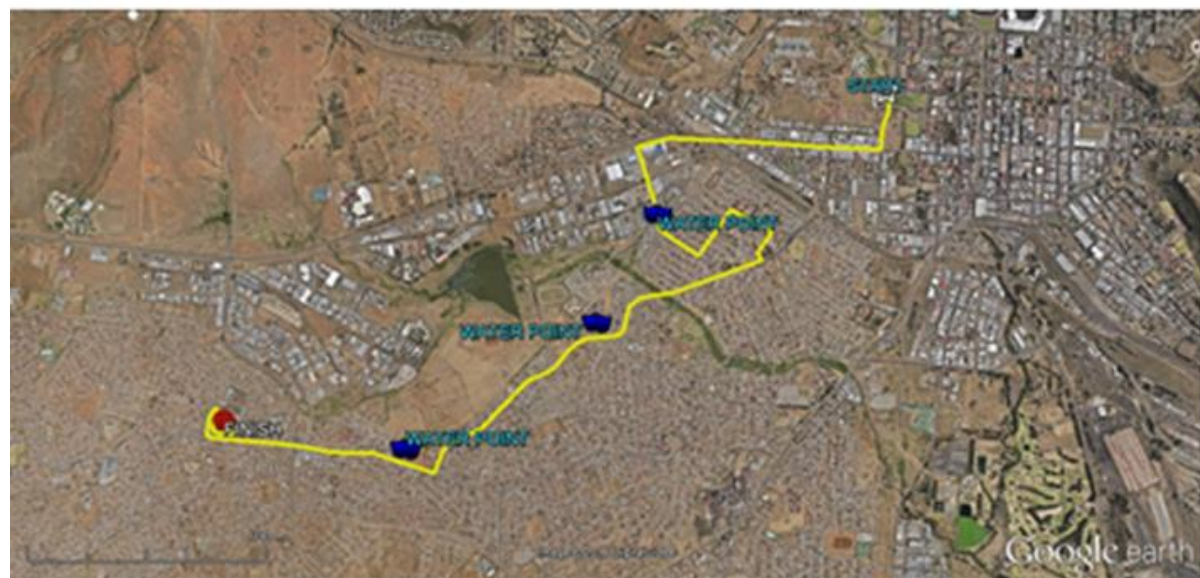


PROFILE OF THE ROUTE - 21.1km



- Highest peak is 1451m at 8.3km (Fichardt Park Bridge)

ROUTE MAP – 10km



PROFILE OF THE ROUTE - 10km



- Highest peak is 1432m at 9.5km (towards finish)